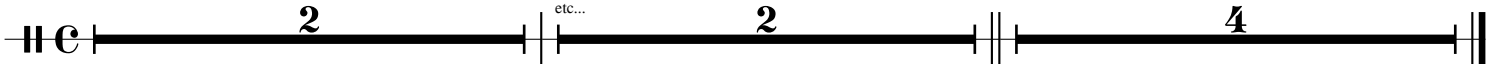


Concert Bass Drum

Mi Única
RMO v. 1

The Peace Poets

♩ = 100
Melody/Lyrics/Harmony (reference)



9 **A** Arrangement begins:
solo voice and/or instrument on melody.

Musical staff for section A, starting at measure 9. It begins with a treble clef and a key signature of one flat. A thick horizontal line with the number '6' above it spans the first six measures. The staff continues with a melody: a dotted quarter note, an eighth note, a quarter note, a quarter note, a quarter note, and a quarter note, with various articulations like accents and slurs.

17 **B** add the Bassline, percussion, and perhaps others playing melody?
(as long as vox in front). Repeat as needed.

Musical staff for section B, starting at measure 17. It begins with a treble clef and a key signature of one flat. The staff contains a melody with slurs and accents, followed by two measures with a double slash (//) indicating a repeat or continuation.

21

Musical staff for section B continuation, starting at measure 21. It begins with a treble clef and a key signature of one flat. The staff contains a melody with slurs and accents, followed by three measures with a double slash (//) indicating a repeat or continuation.

25 **C** Chords + Change groove

Musical staff for section C, starting at measure 25. It begins with a treble clef and a key signature of one flat. The staff contains a melody with slurs and accents, followed by four measures with a double slash (//) indicating a repeat or continuation.

29 **D** enD 1. 2. *"duht" accented and play as short as possible*

Musical staff for section D, starting at measure 29. It begins with a treble clef and a key signature of one flat. The staff contains a melody with slurs and accents, followed by two first endings (1. and 2.) and a final measure with a double slash (//) indicating a repeat or continuation.

32 Full harmony at letter "D" for reference.

Musical staff for section D full harmony, starting at measure 32. It begins with a treble clef and a key signature of one flat. A thick horizontal line with the number '2' above it spans the first two measures, followed by a double slash (//) indicating a repeat or continuation.