

Tuba

Theory & Praxis

- 'dialectics' order: 1.Tbn (drums fade out & bass hard stops), 2.Tpt, 3.Clar, 4.Fl, 5.Sax, 6.Tbn(again), Snare cue to A1
 -when leaving 'dialectics' section, snare will cue w / a 1 bar riff
 -when you hear the snare, decresendo, breathe on beat 4

R. Streb

Intro

♩ = 90-100

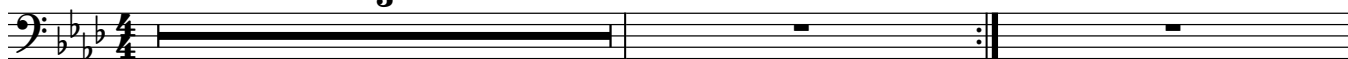
16th Note Swing

3

1.

4

2.



6

A

8



A1

1.

2.



B

4

lock in w / the bass drum

20

22



B1

24

26



28

30

To Coda



cresc. - - - - -

m.30 is optional.

8va if you're on bone or euph

Solo 1

Reed Solo 32

34

Reed Solo Continued...

36

38



Solo 2

Brass Solo 40

42

Brass Solo Continued...

44

46



Drum Break - trade 2's

4

52

54

D.S. al Coda



2x w / o "dialectics" section

For "dialectics" 4-6x. After 2x, begin to peel away and transition to "dialectics"

bass rests

during 'dialectics'